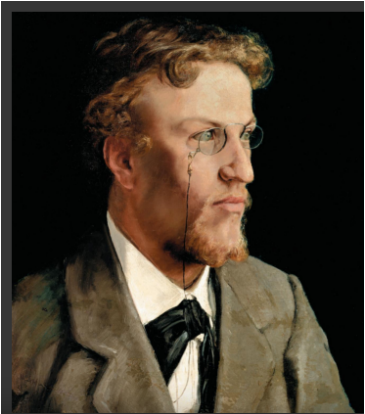


BRÆNDEKILDE – CULTURAL VILLGE

H. A. BRÆNDEKILDE - PAINTER



Kilde: Portræt malet af L. A. Ring

Hans Andersen (H.A.) Brøndekilde was a major Danish painter of the 19th and 20th century.

Early life

H. A. Brøndekilde was born on 7 April 1857, the son of a shoemaker and his wife.

His home (demolished in 1985) was situated next to the church:



H. Havreheds Arkiv (computer coloured).

Education

From 1864 to 1871, he attended primary school. In 1871, he got an apprenticeship as a stonemason and carver in the city of Odense. In 1877, he was admitted to *The Royal Danish Academy of Fine Arts*.

Initial years of his career

Artistically, H.A. Brøndekilde started off with realistic, socially orientated motifs of the working and upper classes, e.g. *Worn-out* (1889) and *Picnic at Odense Å* (1897):



Kunstmuseum Brandts – Odense.



Kunstmuseum Brandts – Odense.

He had exhibitions in Paris, Munich and Chicago, and he travelled widely all over Europe and the Middle East.

Development as an artist

H.A. Brøndekilde explored his talent by dedicating himself to other pursuits than painting, e.g. framing, stained-glass painting, ceramic and the design of copperplates.

After his divorce and second marriage, H.A. Brøndekilde moved to the city of Jyllinge on Zealand. From then on, paintings with a religious touch came to have a more prominent role in his work. The French Impressionist painters also inspired him; in particular, influence from Monet was obvious.

H.A. Brøndekilde died on 30 March 1942 and was buried at Frederiksberg, Copenhagen.

H.A. Brøndekilde's paintings and work are on view at museums in Odense and other art exhibitions in Denmark; he is also represented

at art galleries in Scandinavia and the United States of America.

Along with L.A. Ring, another Danish painter, H.A. Brøndekilde is considered one of the most important painters of the Socialist Realism art movement around 1900.

A commemorative plaque to celebrate Brøndekilde has been installed on the walls of Odense City Hall.

